

Works for Jandorf Finials:

- #60100 – 2" Spindle Finial – Solid Brass
- #60101 – 2" Spindle Finial – Nickel Finish
- #60102 – 1 1/4" Pyramid Finial – Brass Finish
- #60103 – 1 1/4" Pyramid Finial – Nickel Finish
- #60106 – 2" Bullet Finial – Solid Brass
- #60107 – 2" Bullet Finial – Nickel Finish
- #60108 – 2" Bullet Finial – Aged Iron
- #60109 – 1" Top Hat Finial – Brass Finish
- #60110 – 1" Top Hat Finial – Nickel Finish
- #60111 – 3 1/2" Victorian Finial – Tiffany Antique Brass Finish
- #60112 – 1 7/8" Finial – Glass Ball with Brass Finish Base

What's Its Purpose

Secures lamp shade to harp

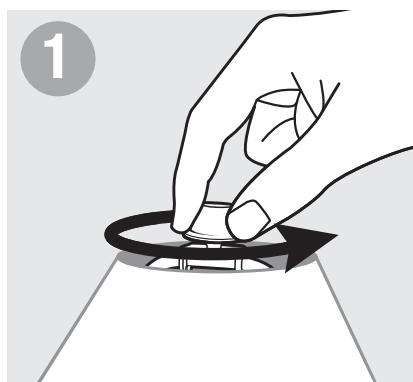
What's Needed

Harp

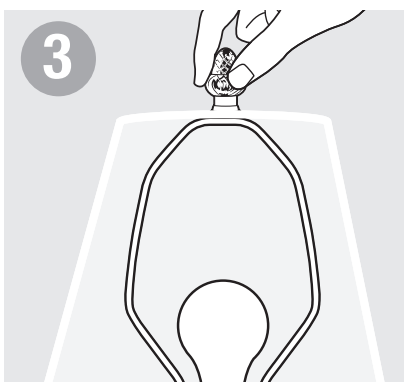
Lamp Shade

Warning

- Before beginning **TURN OFF POWER** by unplugging lamp from wall outlet.
- Follow local electrical regulations or codes when installing and using this product.



At the top of the lamp, unscrew the old finial and remove.



Place new finial onto threaded stud of harp above lamp shade. Tighten finial to secure lamp shade in place.