

## Works for Jandorf Finials:

- #60104 – 1 1/2" Acorn Finial – Brass Finish,  
with 1/8 M to 1/4-27 F Reducer
- #60105 – 1 1/2" Acorn Finial – Nickel Finish,  
with 1/8 M to 1/4-27 F Reducer

## What's Its Purpose

Secures lamp shade to harp

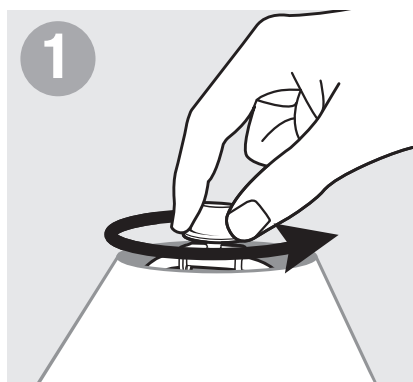
## What's Needed

Harp

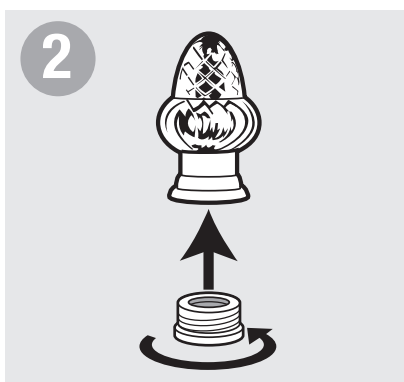
Lamp Shade

## Warning

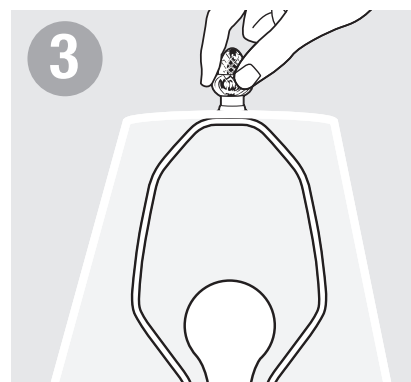
- Before beginning **TURN OFF POWER** by unplugging lamp from wall outlet.
- Follow local electrical regulations or codes when installing and using this product.



At the top of the lamp, unscrew the old finial and remove.



Install reducer into new finial.



Place new finial onto threaded stud of harp above lamp shade. Tighten finial to secure lamp shade in place.