

Works for Jandorf Shade Risers:

#60118 - 1"
#60119 - 1 1/2"

What's Inside

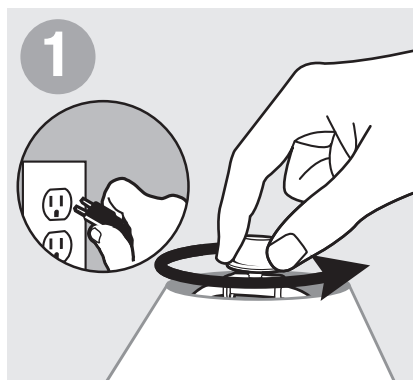
1 - Shade Riser 1/4-27 Thread - Solid Brass

What's Its Purpose

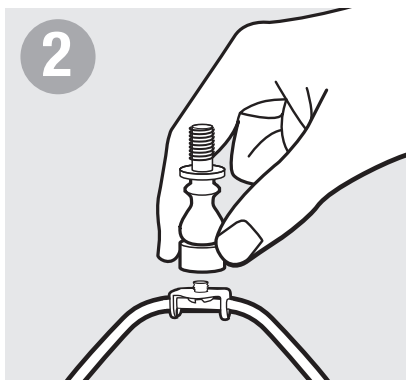
Raises lamp shade.

Warning

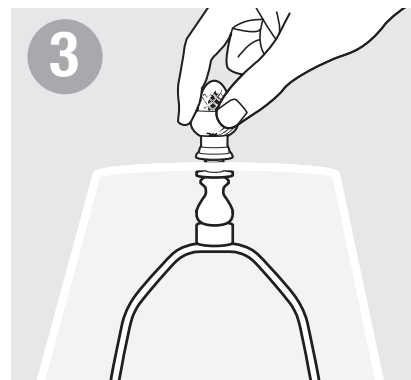
- Before beginning **TURN OFF POWER** by unplugging lamp from wall outlet.
- Follow local electrical regulations or codes when installing and using this product.



1
Before beginning **TURN OFF POWER** by unplugging lamp from wall outlet. Unscrew finial and remove lamp shade.



2
Place shade riser on threaded stud of harp. Tighten.



3
Place lamp shade over shade riser and secure with finial.