

Works for Jandorf Socket Keys & Knobs:

- #60142 – Brass Finish Socket Keys with Brass Finish 1/2" extensions 4/36F x 4/36M
- #60143 – Black Socket Knobs with Brass Finish 1/2" extensions 4/36 F x 4/36 M

What's Its Purpose

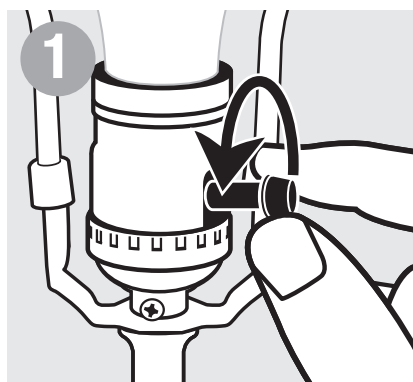
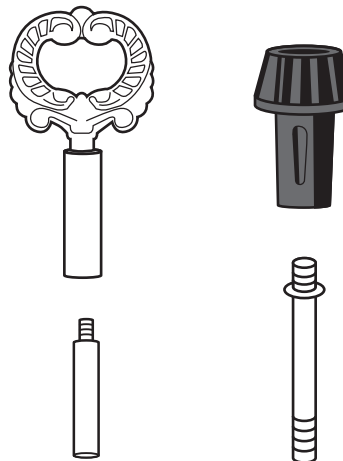
Turning lamp on and off.

Warning

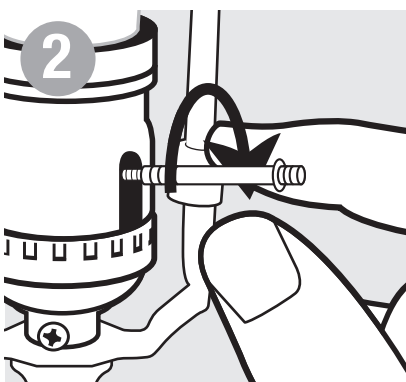
- Before beginning **TURN OFF POWER** by unplugging lamp from wall outlet.
- Follow local electrical regulations or codes when installing and using this product.

What's Needed

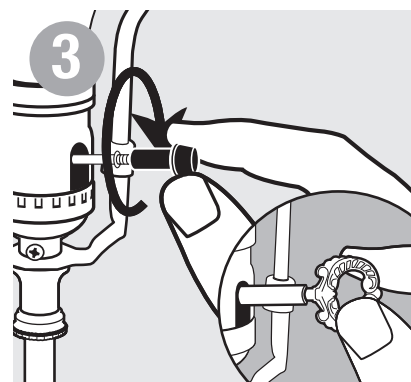
Socket with turn knob or turn key.



Turn old socket key or knob counterclockwise to remove from socket.



If extender is required, thread extender clockwise onto socket.



If extender was used, thread socket key or knob clockwise onto extender. Otherwise, thread socket key or knob clockwise onto socket.